

FFCUP Series

ISO 16028 Connect Under Pressure Flat Face Plug/Male



The Eaton FFCUP Series plug/male coupling is an ISO 16028 standard interchange. The flush face design prevents fluid loss on disconnection and air inclusion on connection guaranteeing excellent flow capability. An integrated patented system allows the Eaton FFCUP series plug to be connected to a socket/female half coupling under 350 bar (5075 psi) residual pressure.

Product Features

- Designed and manufactured in accordance with Article 3.3 of the European Pressure Equipment Directive (PED) 97/23 EC
- Meets dimensional requirements of ISO 16028
- Push to connect
- Connect under residual pressure
- Shock resistant color coding ring option available to prevent accidental crossing of lines
- Standard body material – High resistance carbon steel with zinc trivalent plating
- Alternative end connections available upon request
- Standard seal material: NBR (Nitrile) + AU (Polyurethane)
- Utilize FF Series dust caps

Physical Characteristics

| Body Size | ISO Size* | Nominal Flow Diameter | Max. Operating Pressure | Min. Burst Pressure | Rated Flow** | Air Inclusion | Fluid Loss | Force to Connect |
|-----------|-----------|-----------------------|-------------------------|---------------------|--------------|---------------|------------|------------------|
| (in) | (mm) | (mm) | bar (psi) | bar (psi) | L/min (gpm) | ml-cc. | ml-cc. | N lbf |
| 3/8 | 10 | 8.6 | 350 5075 | 1400 20300 | 29.4 7.76 | 0.010 | 0.006 | 350 79 |

* The ISO size corresponds to the internal diameter of the hose or the external diameter of the rigid tube (as defined in ISO 4397 Standard)

** Indicated values refer to a 1 bar/14.5 psi pressure drop

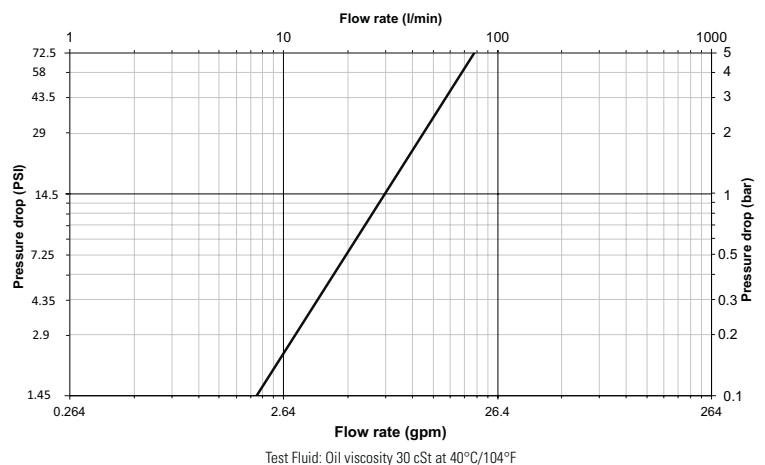
Connect Under Pressure Operating Guidelines

- The plug can be connected against 350 bar/5075 psi residual pressure to sockets/females meeting ISO 16028 standard requirements.
- Plug only is under pressure while connected.
- During the connection phase, the socket must not be under pressure.
- Disconnection under pressure is strictly forbidden.
- Connection under pressure may require a few seconds: the force to connect must be maintained during this lapse of time.

Applications & Markets



- Connection to hydraulic pumps, jacks, distributors and accessories
- Hydraulic circuits
- Material handling
- Construction
- Agriculture
- Iron and steel industry
- Railway
- Industrial plants



Seal Elastomer Data*

| Seal Elastomer | Max. Operation Temperature Range |
|-----------------------------------|----------------------------------|
| NBR (Nitrile) + AU (Polyurethane) | -25°C +100°C/-13°F +212°F |

* For reference only, based on Eaton recommended temperatures.

Contact Eaton technical support for further information on fluid compatibility

FFCUP Series

ISO 16028 Connect Under Pressure Flat Face Plug/Male

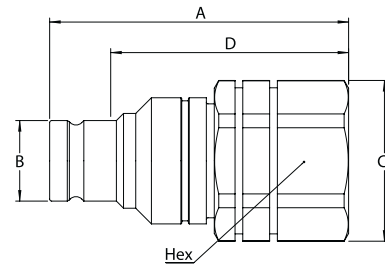


Fig. 1

Plugs (Male)

| Part Number | Body Size | ISO Size | Nominal Flow Diameter | Thread Size* (Female) | | Fig. | Dimensions | | | | | | | | | | Weight | |
|--------------|-----------|----------|-----------------------|-----------------------|--------|------|------------|--------|--------|--------|----------|--------|--------|--------|--------|----------|--------|-------|
| | | | | NPT | BSPP | | A (in) | B (in) | C (in) | D (in) | Hex (in) | A (mm) | B (mm) | C (mm) | D (mm) | Hex (mm) | lbs | grams |
| 10FFPCUP37 | 3/8 | 10 | 8.6 | 3/8-18 | - | 1 | 2.89 | 0.74 | 1.55 | 2.28 | 1.41 | 73.5 | 18.7 | 39.5 | 58.0 | 36 | 0.69 | 314 |
| 10FFPCUP37BS | | | | - | 3/8-19 | 1 | 2.89 | 0.74 | 1.55 | 2.28 | 1.41 | 73.5 | 18.7 | 39.5 | 58.0 | 36 | 0.69 | 314 |
| 10FFPCUP50 | | | | 1/2-14 | - | 1 | 2.89 | 0.74 | 1.55 | 2.28 | 1.41 | 73.5 | 18.7 | 39.5 | 58.0 | 36 | 0.66 | 300 |
| 10FFPCUP50BS | | | | - | 1/2-14 | 1 | 2.89 | 0.74 | 1.55 | 2.28 | 1.41 | 73.5 | 18.7 | 39.5 | 58.0 | 36 | 0.66 | 300 |

* Alternative end connections available upon request.

Colour Coding Ring Option*

| Body Size | ISO Size | Nominal Flow Diameter | Plug/Male Ring Part Number** | | | | Tool Part Number |
|-----------|----------|-----------------------|------------------------------|-----------|-----------|-----------|------------------|
| | | | Blue | Red | Yellow | Green | |
| 3/8 (in) | 10 (mm) | 8.6 (mm) | CR10FFPLB | CR12FFPRD | CR10FFPYL | CR10FFPDG | CR10FFSP93 |

* For requests on alternative colours or installation instructions, please contact your Eaton sales representative.

** Orders must be in multiples of 10 pcs.



Powering Business Worldwide

Eaton Quick Disconnect Couplings代理商

信德迈科技(北京)有限公司_CNMEC Technology Company

北京朝阳区望京SOHO-T1-C座2115室 邮编: 100102

Tel:010-8428 2935, 8428 9077

Fax:010-8428 8762, 139 1096 2635

Http://www.cnmec.biz

Email:sales@cnmec.biz